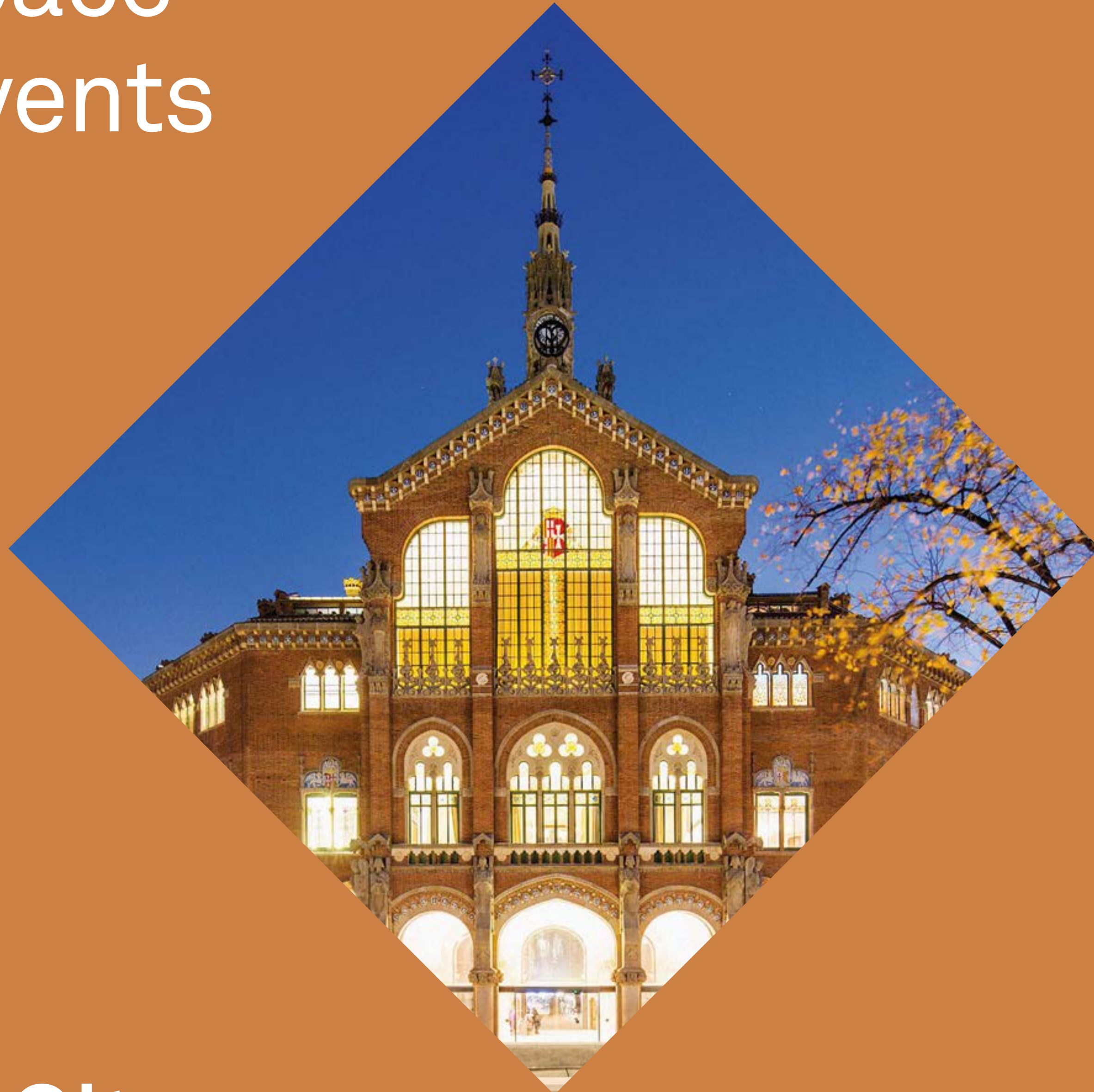


A singular space
for unique events



Sant Pau
Art Nouveau Site





An old hospital,
an Art Nouveau masterpiece

The Sant Pau Art Nouveau Site, declared a World Heritage Site by UNESCO in 1997, is available to companies and institutions offering them a set of indoor and outdoor spaces for holding events and corporate events.

The Administration Pavilion, the main building of the architectural complex designed by Lluís Domènech i Montaner, houses different rooms for multipurpose uses that combine functionality, beauty and history to create the best experiences possible.

Auditoriums for conventions, heritage spaces for banquets, extensive gardens for organizing exclusive events or locating photographic sessions and audiovisual productions... Sant Pau is a city within a city, ideal for making any project a reality.

Our Rooms

Auditoriums

Pau Gil Auditorium

Francesc Cambó Auditorium

Multipurpose rooms

Lluís Domènech i Montaner Hall

Hipòstila Hall

1902 Space

Meeting rooms and gardens

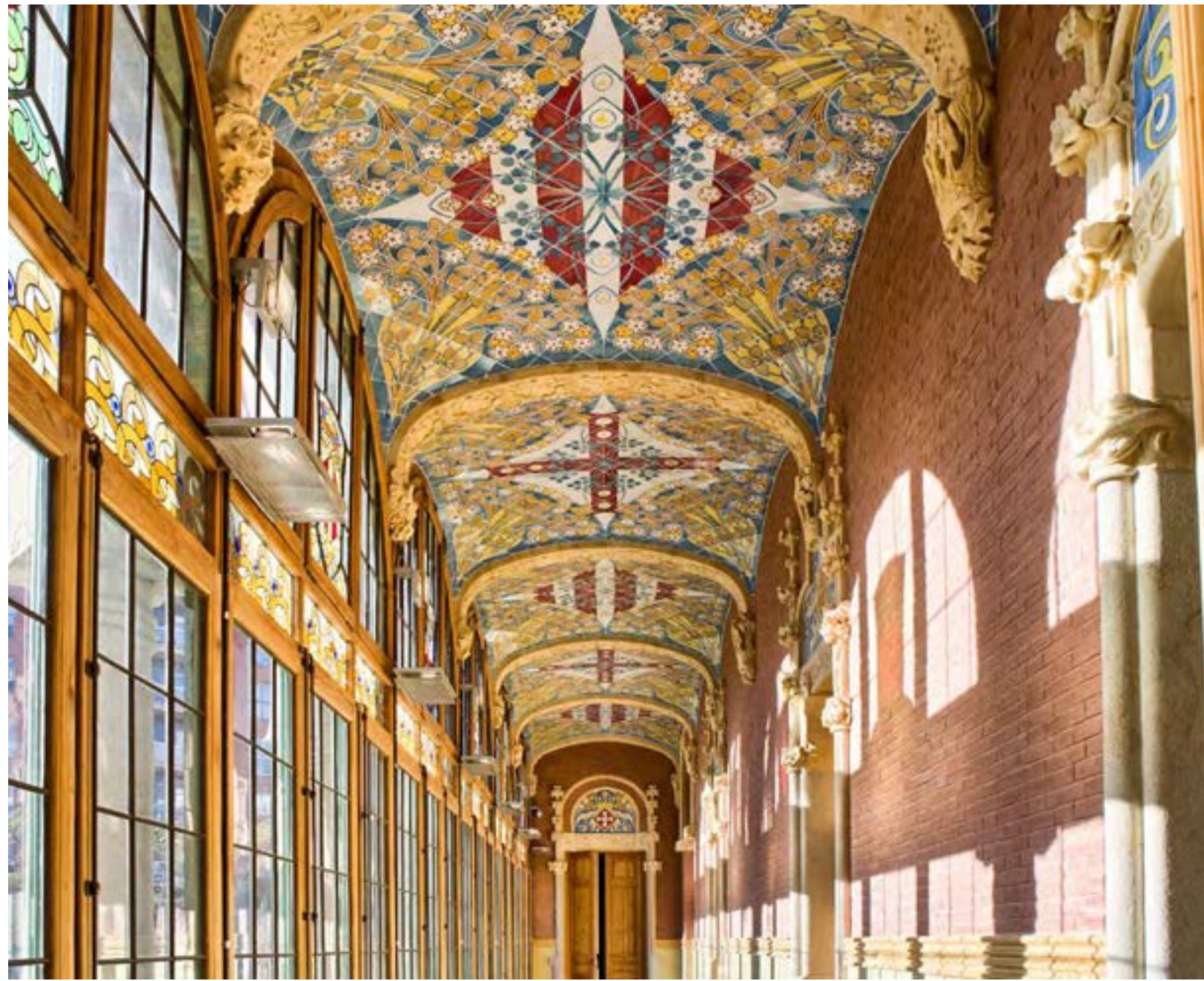
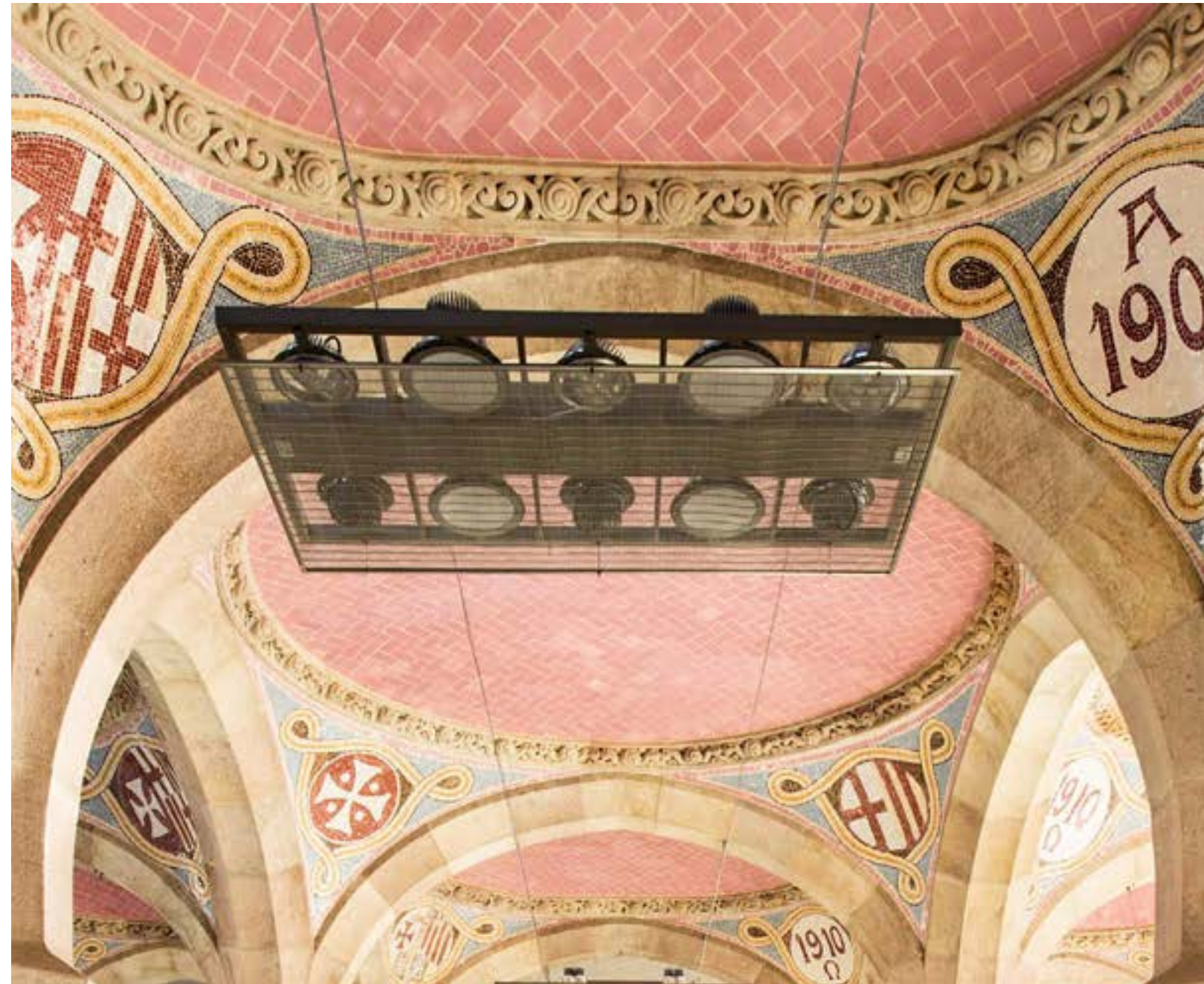
Meeting Rooms

Boardroom

Exterior Areas




A singular space
for unique events



Pau Gil Auditorium

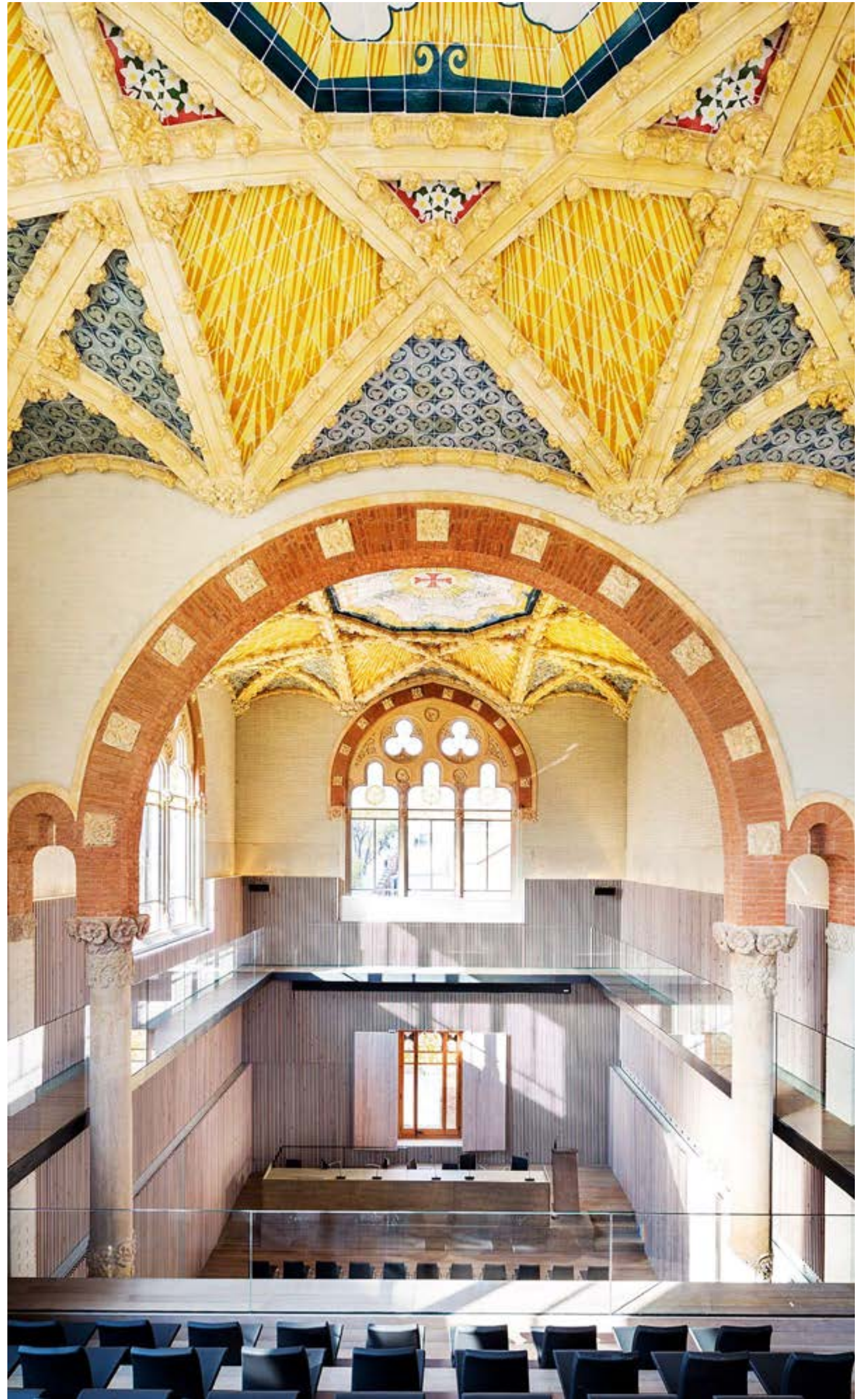
245 m²

190  Conference

40  U-shaped table

65  School





Pau Gil Auditorium

The Pau Gil room is one of the Sant Pau Art Nouveau Site's two auditoriums. Located in the west wing of the main building, this two-storey space can accommodate all kinds of presentations and conferences. Thanks to its versatility, the room's set-up and furniture can be adapted to the requirements of each event.

The space stands out for the chromatic richness of the ceramic ceiling tiles, as well as two majestic columns that connect the lower and upper levels. Guests access the room through a light-filled corridor featuring large windows with stained-glass accents.

Audiovisual equipment

Projector

Projection screen 6 x 4.5 m

3 table monitors for content display for speakers

Lectern with microphone

Capture of images with HD cameras

Simultaneous translation wireless equipment (receivers, interpreters and technicians not included)

Fixed and wireless microphones: 2 lapel microphones, 2 handheld microphones, 1 lectern microphone, 6 tabletop microphones

Basic stage lighting

Surface area

Total:
245 m²

Floor 1:
168 m²

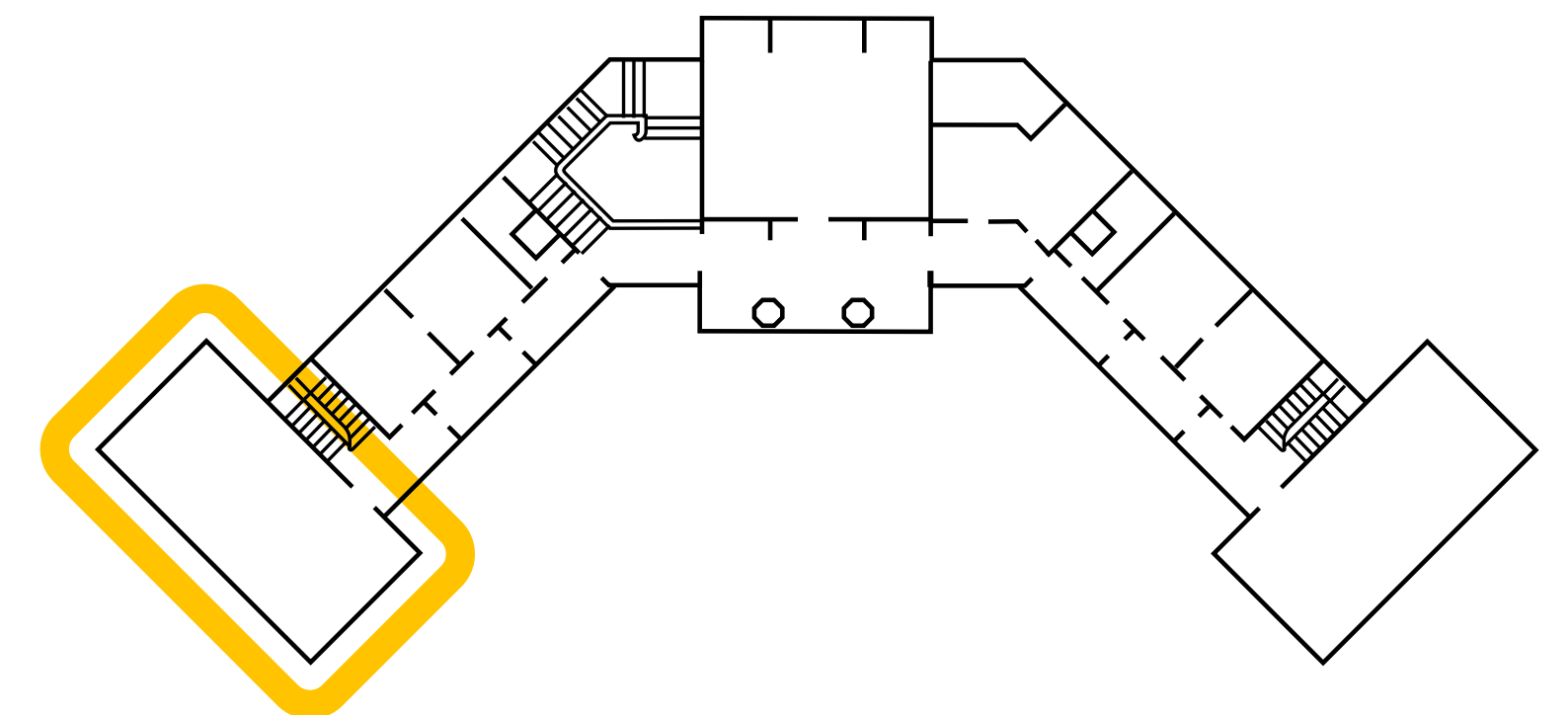
Amphitheater:
77 m²

Capacity

Conference:
190 people

U-shaped table:
40 people

School format:
65 people




Floor 1. Administration Pavilion.

Francesc Cambó Auditorium

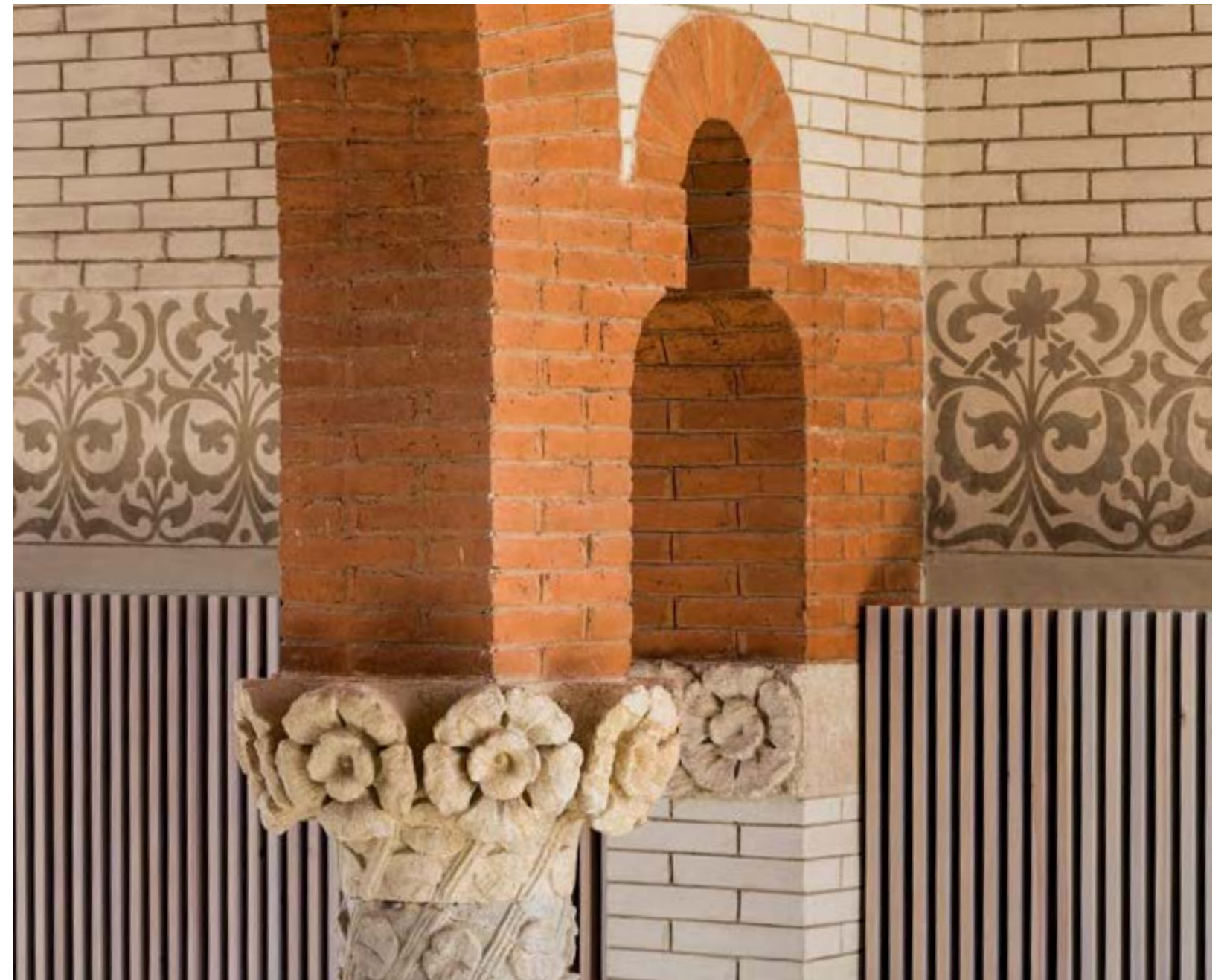
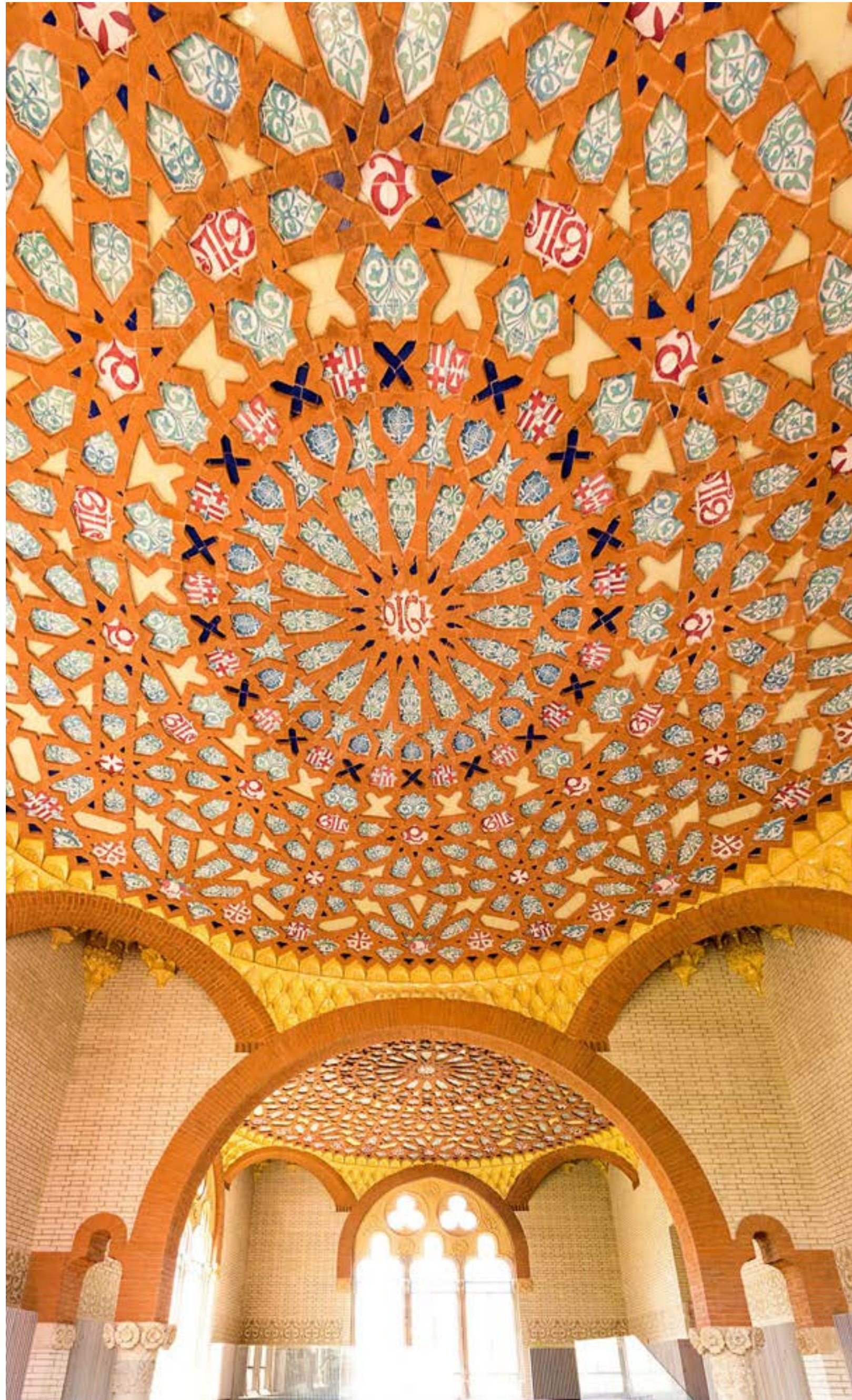
245 m²

190  Conference

40  U-shaped table

65  School





Francesc Cambó Auditorium

Located in the east wing of the Administration pavilion, the Francesc Cambó auditorium is functional and modern. This room is easily adapted to the needs and size of each event, as it is also a space that is unfettered by fixed furniture. The room stands out as a monumental space with great artistic value, which is particularly true of the Mozarabic-style high ceiling. Event participants access the room through a beautiful, glass-enclosed gallery that overlooks the main entrance.

Audiovisual equipment

Projector

6 x 4.5 m projection screen

3 tabletop monitors to display content for speakers

Lectern with microphone

Capturing of images with HD cameras

Simultaneous translation wireless equipment (receivers, interpreters and technicians not included)

Fixed and wireless microphones:
2 lavalier microphones, 2 handheld microphones, 1 lectern microphone, 6 table microphones

Basic scene lighting

Surface area

Total:
245 m²

Floor 1:
168 m²

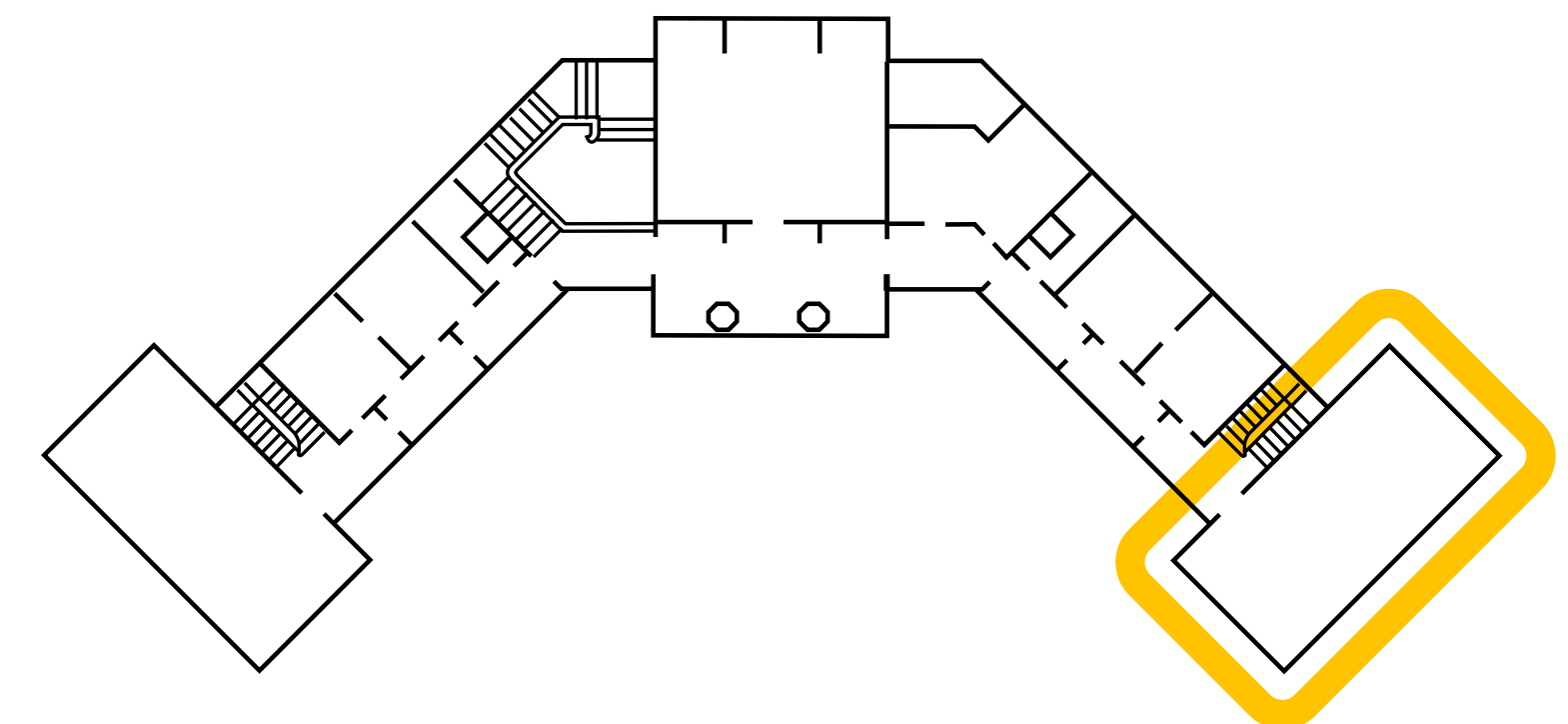
Amphitheater:
77 m²

Capacity

Conference:
190 people

U-shaped table:
40 people

School format:
65 people



Floor 1. Administration Pavilion.

Lluís Domènech i Montaner Hall

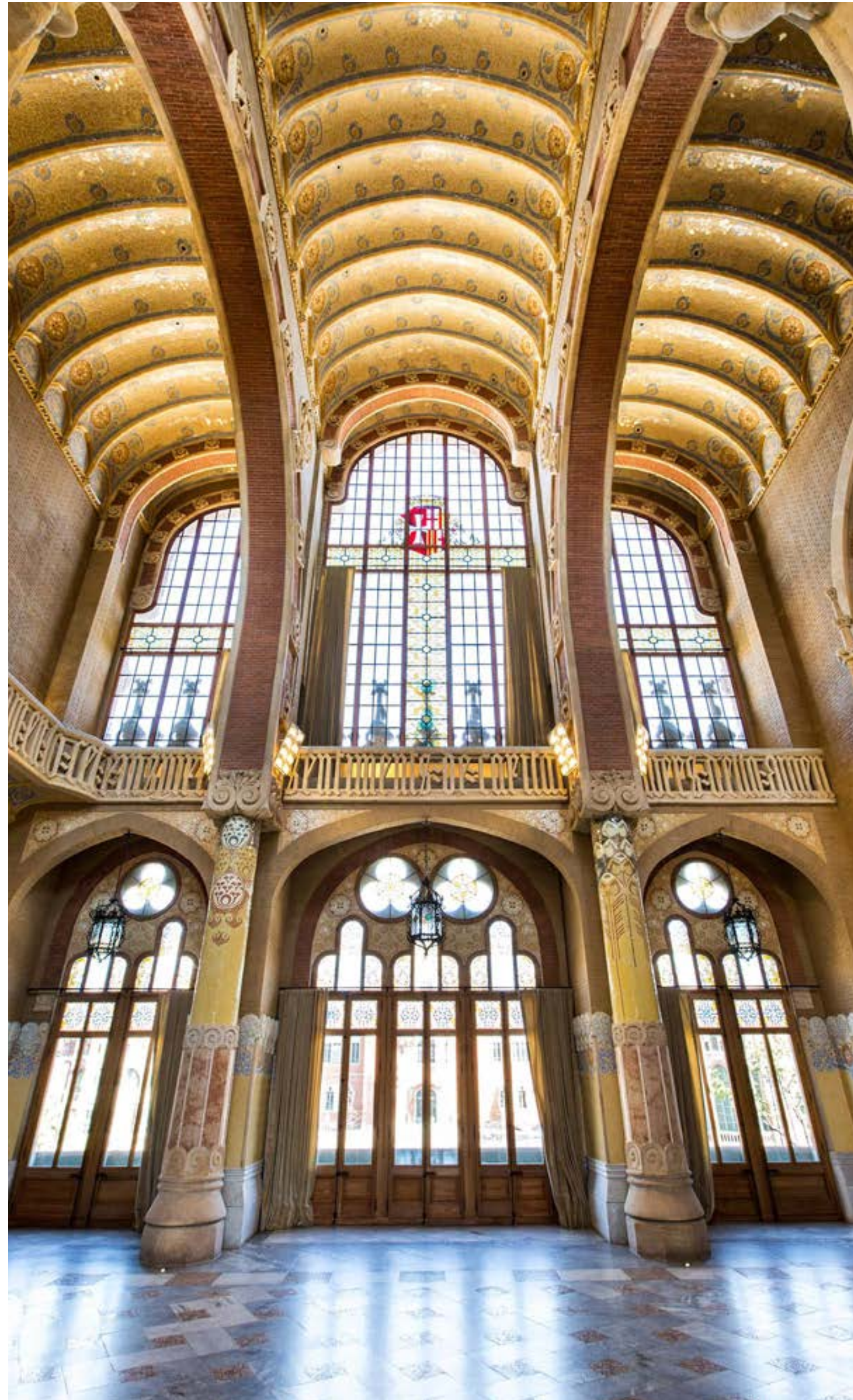
270 m²

130  Conference

200  Cocktail

120  Banquet





Lluís Domènech i Montaner Hall

The Lluís Domènech i Montaner Hall is one of the spaces with the greatest artistic value in the Administration Pavilion. The decoration of the room combines the use of the most varied construction materials and craft techniques, as a sample of total modernist art. Located on the first floor of the building, from the room you can enjoy a privileged view of the entire Modernist Enclosure. The space also has a lobby from which presents an enviable panoramic view of Gaudí Avenue and the Sagrada Familia temple. The charm of this location makes it ideal for any evening event, which allows the privilege of experiencing Sant Pau during golden hour, dusk and the magic of the night.

Audiovisual equipment

Large format projection video (single image) or two 60" plasma screens

400x300 cm projection screen
Audio and video matrices
and with connection to mixing tables

Simultaneous translation wireless equipment (receivers, interpreters and technicians not included)

Fixed and wireless microphones

Space available outside visiting hours.

Surface area

Room:
170 m²

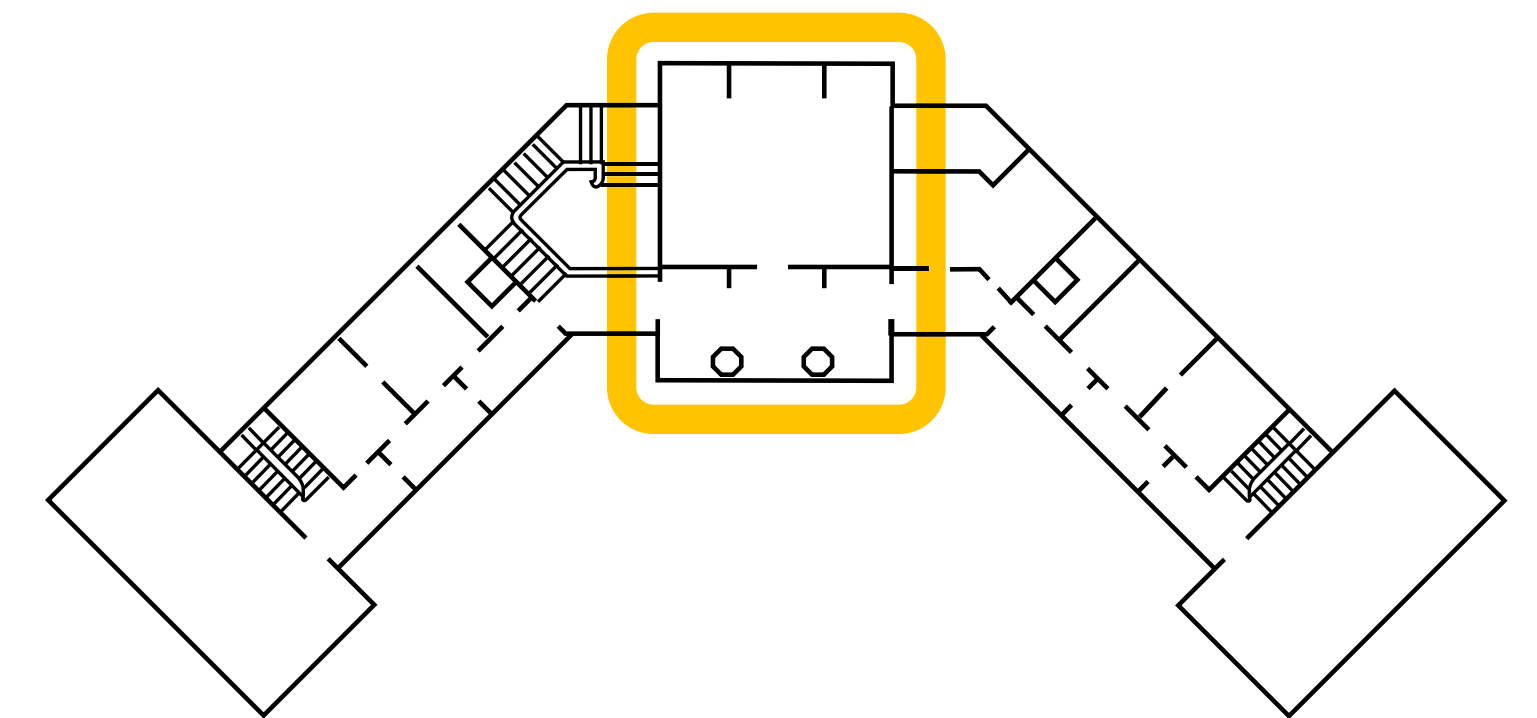
Foyer:
100 m²

Capacity

Conference:
130 people

Cocktail:
200 people

Banquet:
120 people



Floor 2. Administration Pavilion

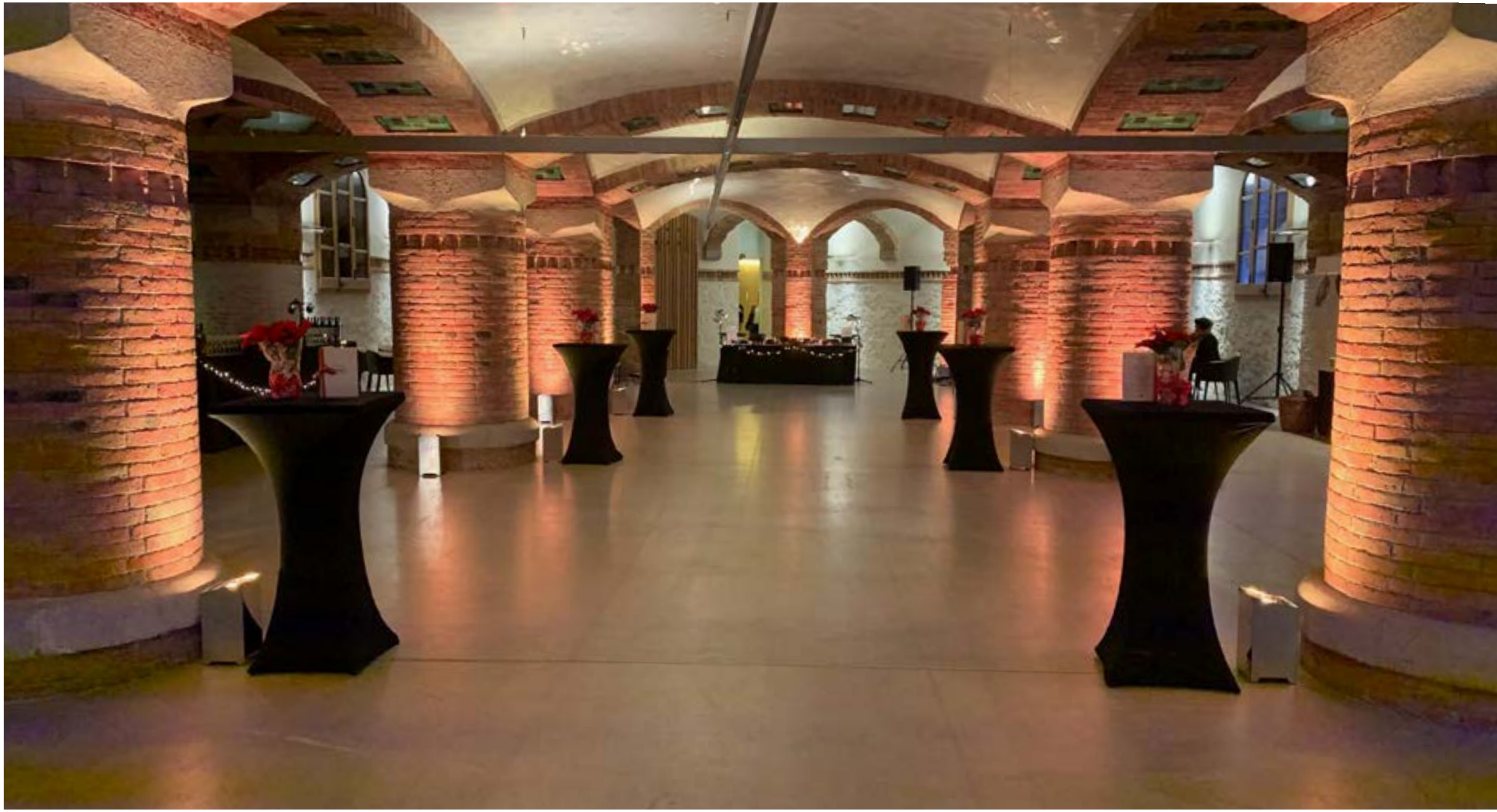
Hipòstila Room

465 m²

300  Cocktail

230  Banquet





Hipòstila Room

Brick and ceramics are the main construction elements of this space, the largest in the Administration Pavilion. The Hipòstila Room is easily accessible from the main lobby of the building. In addition, it has a direct connection with the tunnels, from where you can comfortably go to the gardens of the Sant Pau Art Nouveau Site.

Its versatility allows it to carry out a variety of assemblies: cocktails, dinners, presentations, exhibitions and other types of events. Moreover, the space has two adjoining rooms that facilitate the expansion of the capacity to adapt to the needs of each occasion.

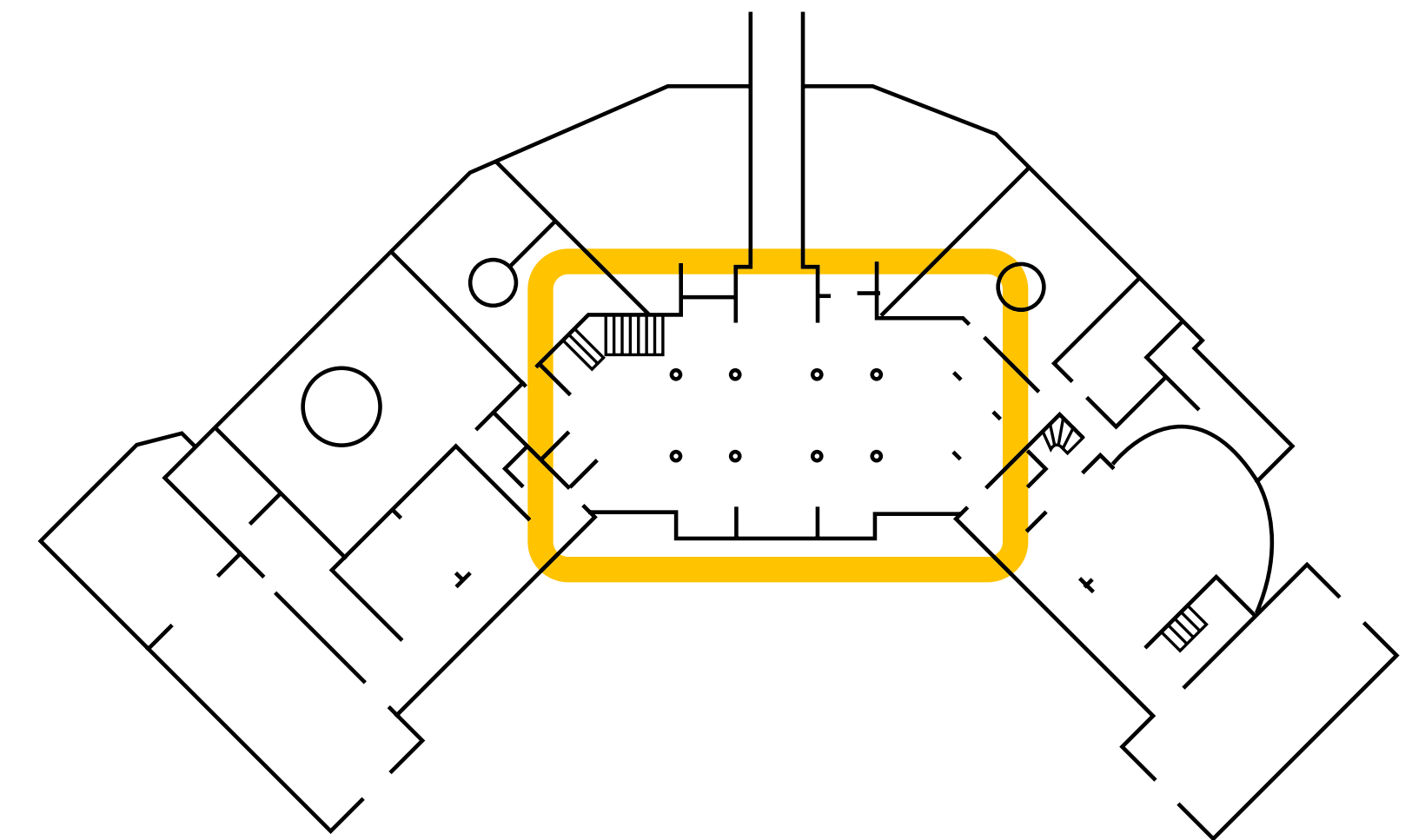
Surface area

Room:
465 m²

Capacity

Cocktail:
300 people

Banquet:
230 people



Floor -1. Administration Pavilion

1902 Room

147 m²

120  Cocktail

90  Banquet





1902 Room

Versatility and connection with the outdoors: these are the two main features of the 1902 Space. This room has a private terrace, which makes it the ideal location to host events that require both interior and exterior settings.

Allowing for a multitude of uses, this open space can be adapted to any event format. It also has exclusive use services and a private entrance with views of the main facade of the Administration Pavilion: a unique space in a privileged location at the Sant Pau Art Nouveau Site.

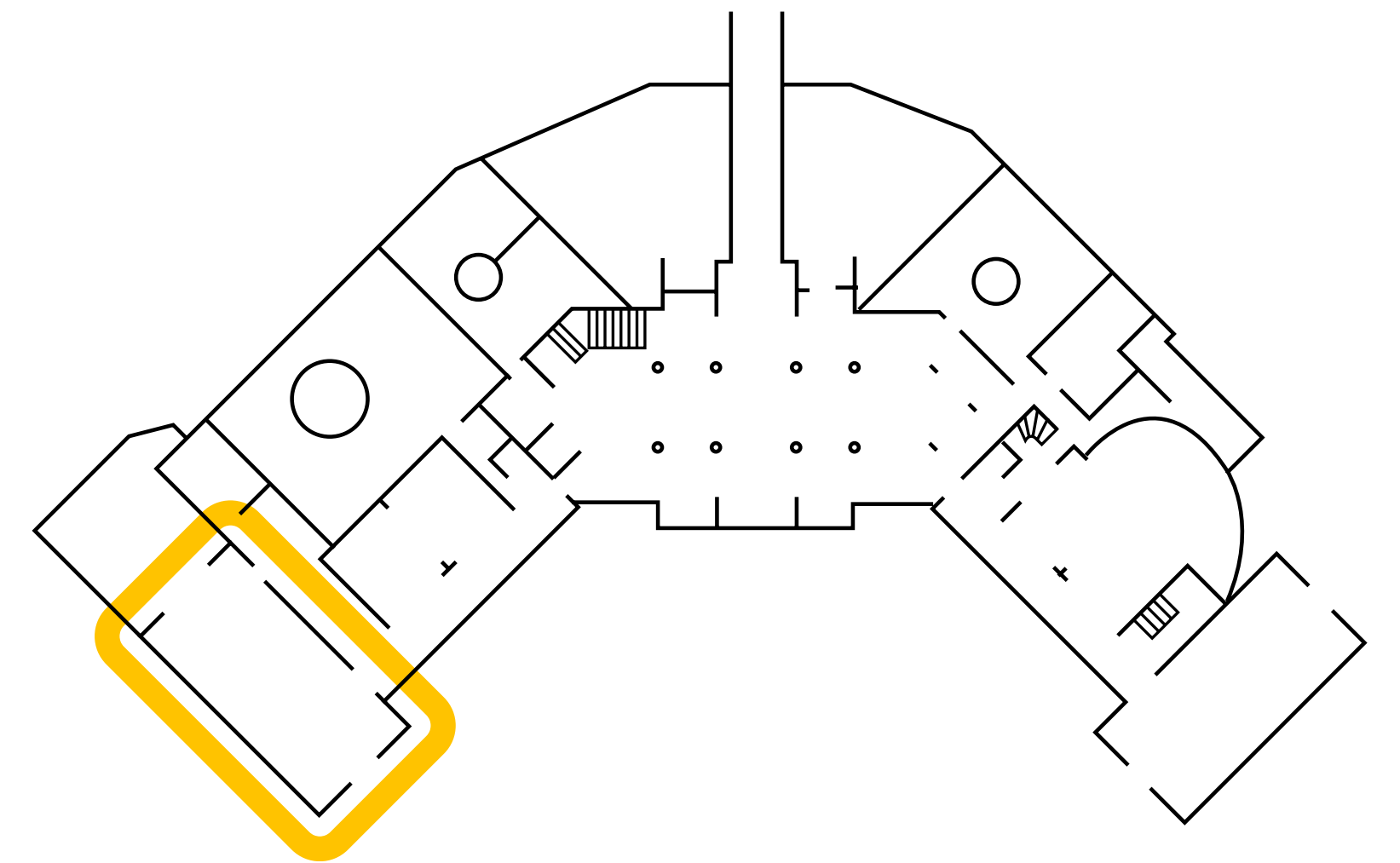
Surface area

Room:
147 m²

Capacity

Cocktail:
120 people

Banquet:
90 people




Floor -1. Administration Pavilion

Meeting Rooms

45 m²

35  Conference


16  U-shaped table

30  Banquet

15  School

90 m²

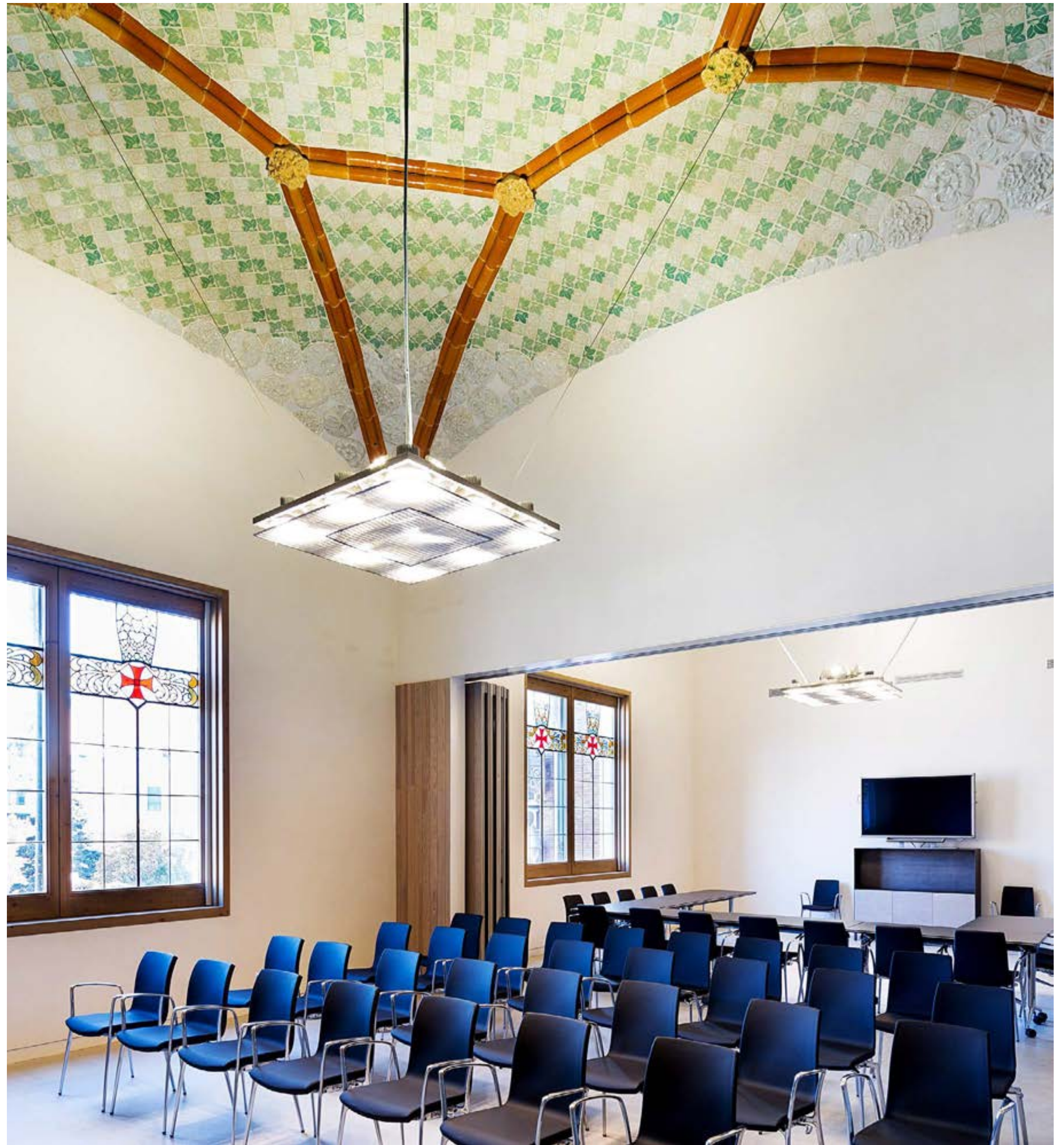
70  Conference

30  U-shaped table

60  Banquet

35  School





Meeting Rooms

Set of 8 rooms with capacity for between 35 and 70 people. These are modular and multipurpose spaces that are easily adapted to the needs of users, and in some cases can increase their surface area. The structure of these rooms makes them ideal for holding corporate meetings, seminars, courses and other small-format events.

Audiovisual equipment

60" plasma screen

Computer

Internet connection by cable and WIFI

Capacity

6 rooms
of 45 m²

Conference: 35 p

U-shaped table: 16 p

Banquet: 30 p

School format: 15 p

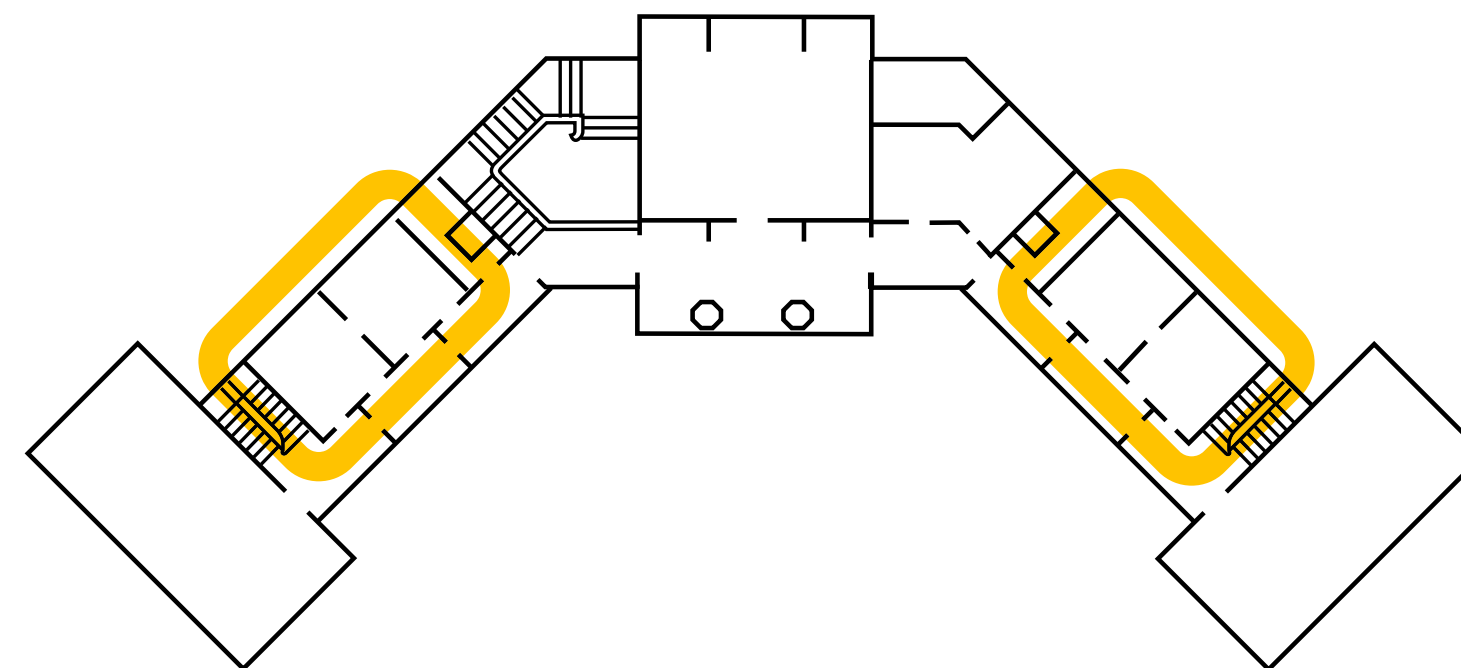
2 rooms
of 90 m²

Conference: 70 p

U-shaped table: 30 p

Banquet: 60 p

School format: 35 p



Administration Pavilion.
Floors -1, 1 and 2.

Possibility of dividing
the room into
two spaces of 45 m²

Boardroom

109_{m²}

25 





Boardroom

Located at the top of the building, the boardroom offers meeting participants a spectacular view of the Domènech i Montaner Hall. This spacious room is ideal for exclusive small-format meetings. The room is splendidly decorated with ceramic-tile mosaics of great artistic value and majestic high ceilings.

Audiovisual equipment

90” plasma screen

Speakers

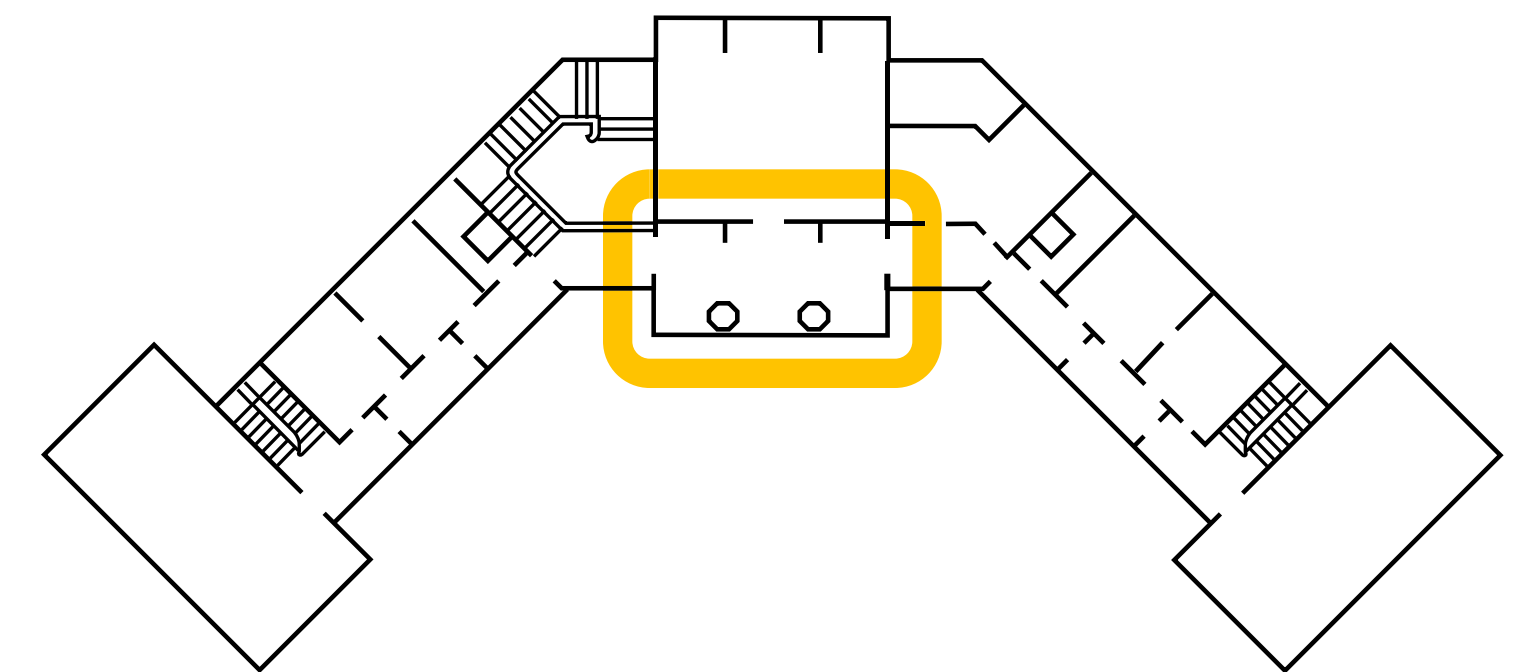
Computer

Surface area

109 m²

Capacity

20 people

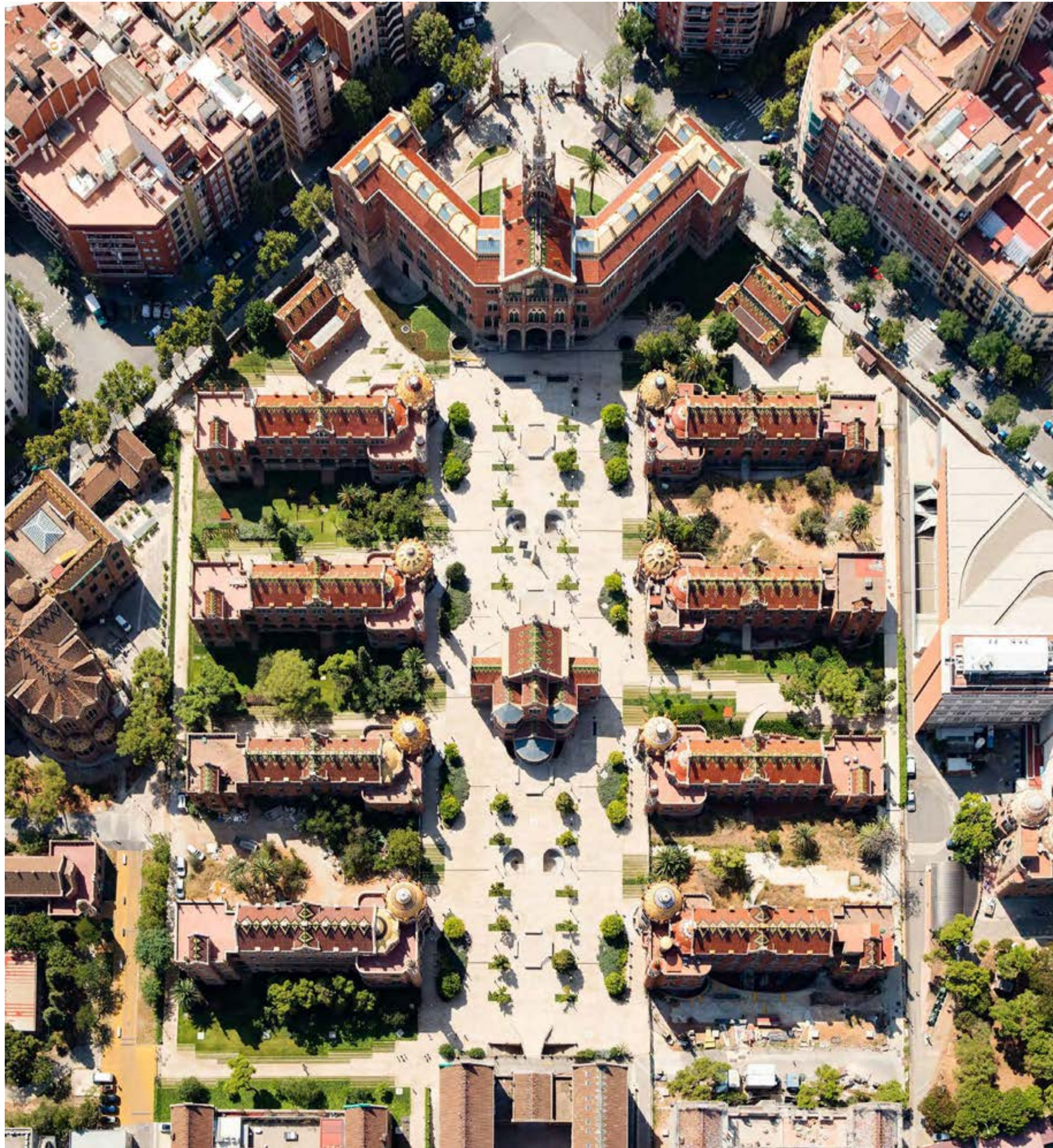


Floor 3. Administration Pavilion.

Outdoor Spaces

4000 m²





Outdoor Spaces

Sant Pau also stands out for the beauty and extension of its exterior space. Originally designed as a garden-city, the pavilions of the Art Nouveau Site are surrounded by green areas.

Two areas can be distinguished from the set of gardens that surround the buildings: the northern area, with views over the old Operations House and the Convent, and the southern area, delimited by the Administration Pavilion and the main facade of the old operating rooms.

These two different areas allow hosting all kinds of outdoor events, enjoying a unique view of the modernist complex. Access to the garden is from the main lobby of the Administration Pavilion.

Useful surface

North garden area: 2.000 m²

South garden area: 2.000 m²

Consult capacities
depending on the assembly



Sant Pau

Recinte Modernista



Organització
de les Nacions Unides
per a l'Educació,
la Ciència i la Cultura



Antic Hospital de la
Santa Creu i Sant Pau
Inscrit a la Llista del
Patrimoni Mundial el 1997

The Sant Pau Art Nouveau Site is located strategically in the heart of the city of Barcelona. Just 800 metres from the Sagrada Família, the site also has excellent transportation connections.

Sant Antoni Maria Claret, 167
08025 Barcelona
93 511 78 62

events@fundaciosantpau.cat
www.santpau.barcelona

Metro: Sant Pau | Dos de Maig (L5)
Bus: H8, 19, 47, 117, 192



Recinte
Modernista

